


Venue Hire 

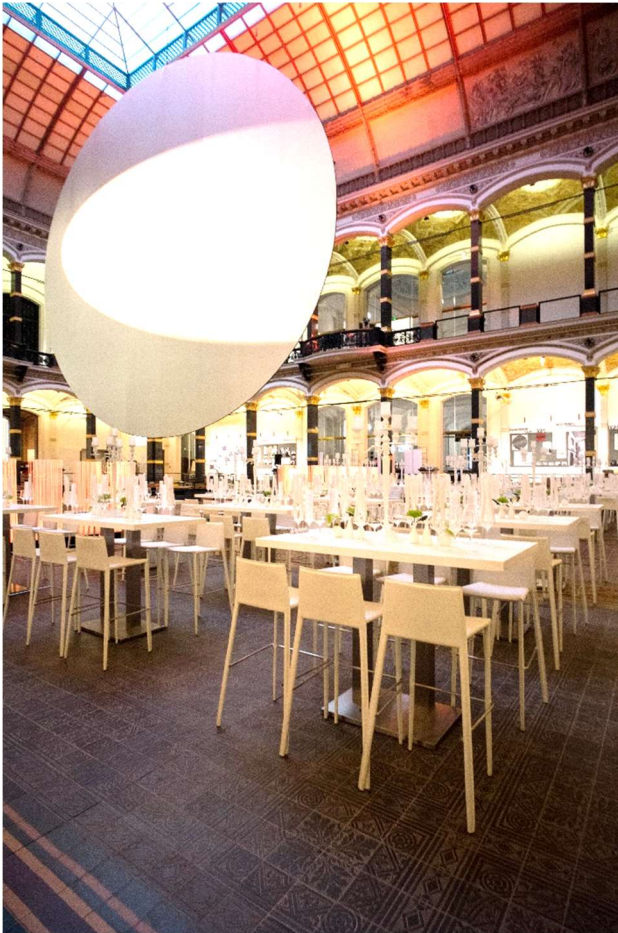
Location



© Gropius Bau, Photo: Holger Albrich

The Gropius Bau is one of the most important exhibition halls in Europe. Located in the centre of Berlin, the Gropius Bau presents widely acclaimed exhibitions of contemporary and modern art, as well as performances, workshops, discourse and film screenings. Its programme focuses on opening up the institution, making it a space for artistic creation, community and dialogue. In addition to presenting a genre-spanning exhibition programme, the Gropius Bau is available for hire for events, gala dinners, receptions, conferences, lecture series and film screenings.

Atrium



© Gropius Bau

The brightly illuminated, glass-enclosed atrium on the ground floor is the Gropius Bau's central space. Featuring a 600 m² inner area and a 540 m² surrounding gallery, it is the largest space for hire. The atrium can accommodate events with large numbers of guests. Standing receptions for 700 people as well as seated meals for 450 people are possible.

Facilities

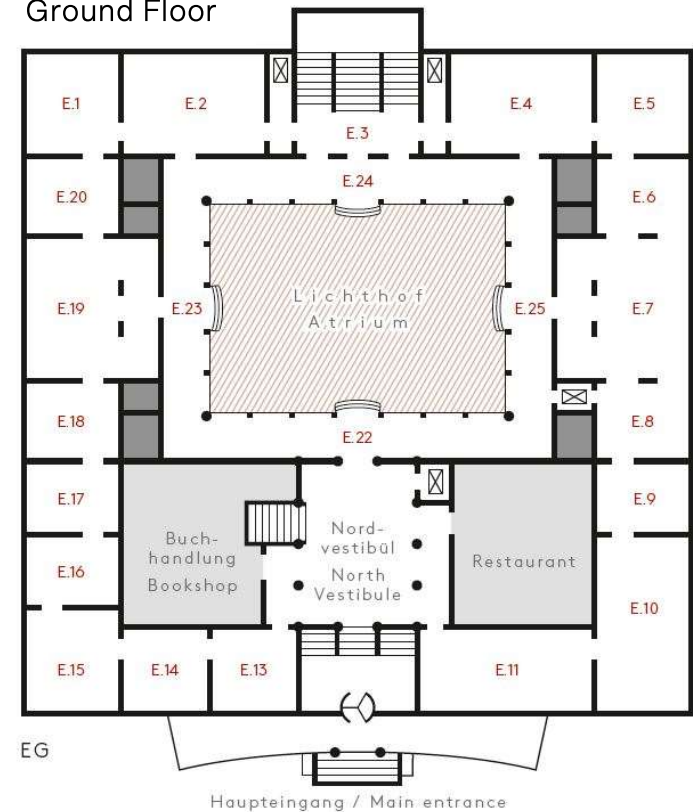
Size
1140 m²

Number of people
Seated meal: 450 people
Standing reception: 700 people

Technology
Sound system
4 Loudspeakers
1 Sound mixer
1 Lectern with microphone
Price exclusive of VAT and event technicians

Space rent
Price on request

Ground Floor



North Vestibule



© Gropius Bau. Photo: Christian Riis Ruggaber.

The North Vestibule (130m²) is located near the entrance area of the Gropius Bau and can accommodate standing receptions for up to 100 people. Featuring a glass cupola ceiling, overhead lighting and a circular opening between the main floors, it can be used for standing receptions held on both the ground floor and the first floor.

Facilities

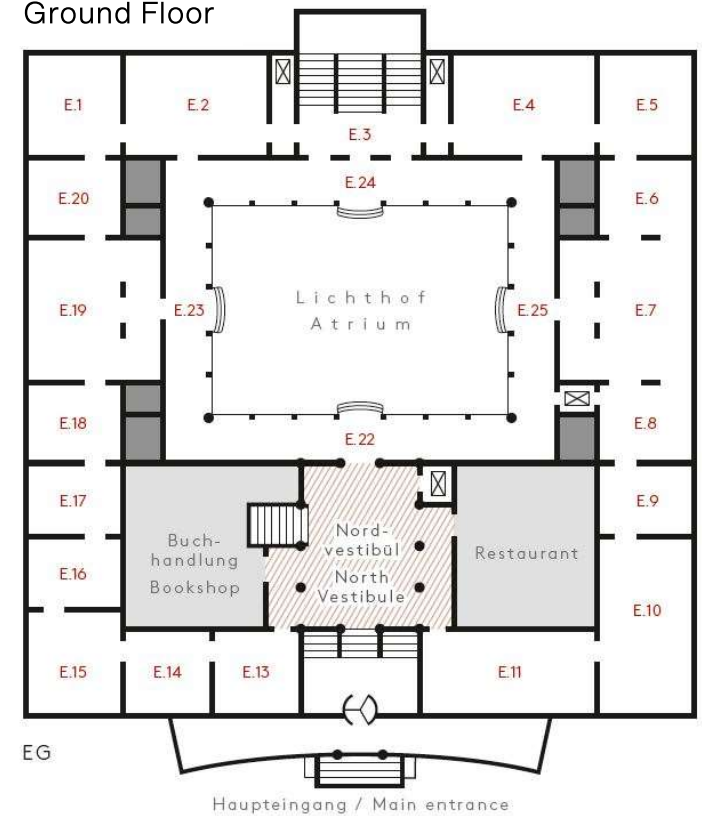
Size
130 m²

Number of people
Standing reception: 100 people

Technology
Sound system
4 Loudspeakers
1 Sound mixer
1 Lectern with microphone
Price exclusive of VAT and event technicians

Space rent
Price on request

Ground Floor



Gallery first floor



© Gropius Bau / Veuve Clicquot

The gallery (540 m²) can be used for small functions of approx. 200 people (seated meal) or 350 people (standing reception). The gallery on the upper floor provides an impressive view of the atrium and the exhibitions.

Facilities

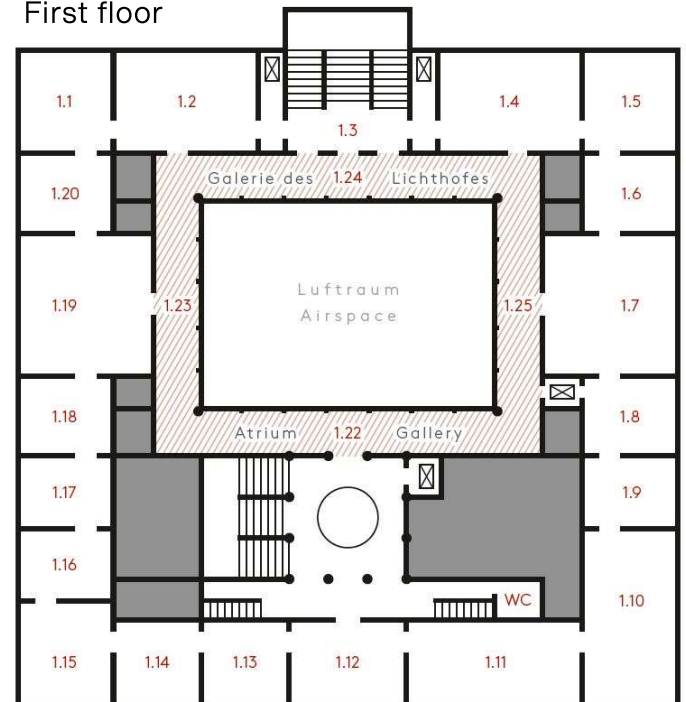
Size
540 m²

Number of people
Seated meal: 200 people
Standing reception: 350 people

Technology
No sound system available

Space rent
Price on request

First floor



1. OG

Gropius Bau
Niederkirchnerstraße 7
10963 Berlin

Contact

Ellen Clemens
T +49 (0)30 254 86-123
organisation@gropiusbau.de
gropiusbau.de

Transportation

Metro line 2 (Stop: Potsdamer Platz)
S-Bahn Linien 1, 2, 25 (Stop: Potsdamer Platz or Anhalter Bahnhof)
Bus: M29 (S Anhalter Bahnhof) / M41